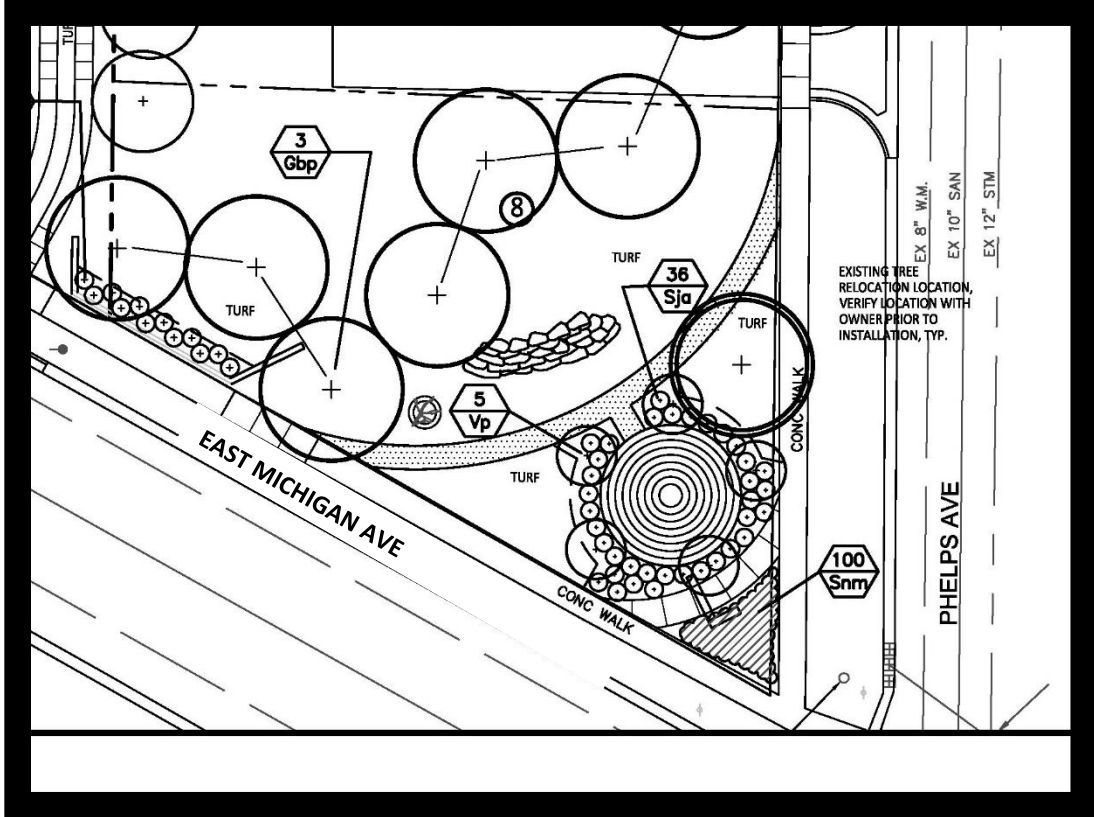


Labyrinth and Signage RFP Addendum

Please find the following attached:

- Architectural drawings of the pocket park
- List of Eastside Historical Elements and Features from Eastside Voices – Oral History Project
- List of resources for local artists
- Eastside History Narrative Key Elements

Architectural drawings of the pocket park



List of Historical Elements and Features from Eastside Voices – Oral History Project

The following historical businesses, features and institutions were identified for potential visual representation in the labyrinth and other efforts. It is not required to represent all elements though those elements in bold were mentioned on repeated occasions and should be represented. The artist may choose other elements that are most practical for representation.

- **Roosevelt School**
- St Mary's Church
- **The Dairy Queen | East Main and Michigan**
- **Hearty Hamburgers | East Main and Michigan**
- Atkins Grocery Store
- Doorn's Department Store | East Main
- In-Between Inn | East Main
- Town N Country Market | East Main
- Triestram's City Drugs | East Main
- **The East branch Library when it was located on East Main**
 - Sledding hills/woods/blueberry trees
- Monk's Grocery Store
- Sportman's Bait Shop | Riverview
- Sutherland Paper Co | East Michigan
- Sam's Gas Station
 - Tight knit supportive community
 - **Alma Powell, long time Eastside librarian.**

1. Respondents should articulate in writing or in a visual format the general concept of how these themes will be represented in the hardscape labyrinth. Photos of the Eastside businesses, features and institutions mentioned above can be found online or at the local library for reference.
2. A visual representation for a permanent, attractive, two-sided "Welcome to the Eastside" sign on the corner of Phelps and East Michigan. Currently, there is an Eastside Gateway Project sign there which is scheduled to be removed. Respondents should make themselves familiar with City signage ordinances and size, height and setback requirements. Respondents will be responsible for permitting and City approvals.
3. A narrative approach and/or a visual representative for an additional interpretive sign that includes narrative and images about the Eastside History. This sign will be located in the pocket park near the labyrinth. Narrative information will be provided by the Land Bank (see below). Respondents should provide a sketch of the interpretive sign as well as details on the materials, durability, and anticipated lifetime of the sign. The Land Bank has provided an example of an interpretive sign at Riverview Launch. Information for this sign is listed on the next page.

Resources for Local Artists:

The following organizations may be able to provide referrals for local artists that have indicated experience in outdoor durable sculpture and/or signage:

- Kalamazoo County Land Bank (inquire for list of artists who have signed up on the Land Bank's bidders list)
- Kalamazoo Arts Council, see artist directory feature on the website
- Black Arts and Cultural Center

Key Elements of the Eastside History Narrative for the interpretative sign:

The Kalamazoo Eastside Neighborhood Association (KENA) is currently finishing up an intergenerational oral history project, Eastside Voices, which is scheduled to be completed early this September. This will inform the final narrative for the interpretive sign for the pocket park. We expect the narrative to be 3-5 paragraphs long and include the general context provided below.

Anticipated language for the interpretative sign: Eastside Voices, a neighborhood history

In 2019, led by the Eastside Neighborhood Association together with the Kalamazoo County Land Bank and Vibrant Kalamazoo, local artists Buddy Hannah and Sid Ellis interviewed 16 current and former Eastside residents as a part of Eastside Voices, an oral history project. Local youth assisted with this project and learned interviewing, video recording and transcribing skills.

Respondents shared their experience of the Eastside as a welcoming, tight knit community where neighbors look out for one and other. The labyrinth depicts elements of the neighborhood's history as told by Eastside Voices participants. Despite some difficult economic times over its history, the Eastside Voices participants emphasized the Eastside has always been and remains a great place to live and a great place to be a kid.

Participants remembered fondly, librarian Alma Powell. Ms. Powell joined the Kalamazoo Public Library staff in 1946 and worked at Lincoln Elementary, the East Branch Library and the main library. She was a celebrated storyteller and enjoyed sharing her rich African heritage and love for books with children. Eastsiders recalled with fondness: sledding, playing in the woods and spending time with and looking out for their neighbors as well as getting ice cream at the Eastside Dairy Queen.

Despite the demolition of several schools such as the iconic Roosevelt School, the Eastside remains known for its positive programs for youth. The Kalamazoo Children's Chorus launched an Eastside choir in 2013, the Peace House, which opened in 2011 gives youth a place to gather and do their homework. Also formed in 2011, Eastside Youth Strong implements quality youth programs to increase classroom achievement and the Eastside Neighborhood Association partners with and provides a number of additional youth activities.

In 2018 and 2019, led by the Kalamazoo County Land Bank together with the Eastside Neighborhood Association, the Eastside Gateway Project set the state for 7 newly constructed highly energy efficient homes at Foresman and East Michigan. This new pocket park was designed by residents and stakeholders and was built as a part of this effort. This pocket park is proud to feature Eastside Voices and its stories. More information about the Eastside History and narrative from the Eastside Voices can be found at XXXXXXXXXXXXXXXXXXXX .